
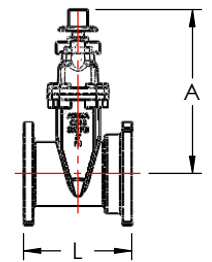
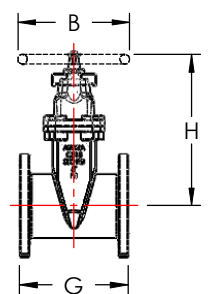
 Open Left  
 Open Right



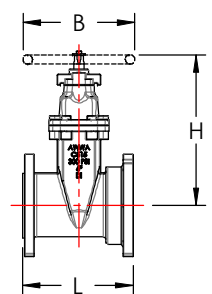
Certified to NSF/ANSI 61



Flange x MJ Model 2010FM

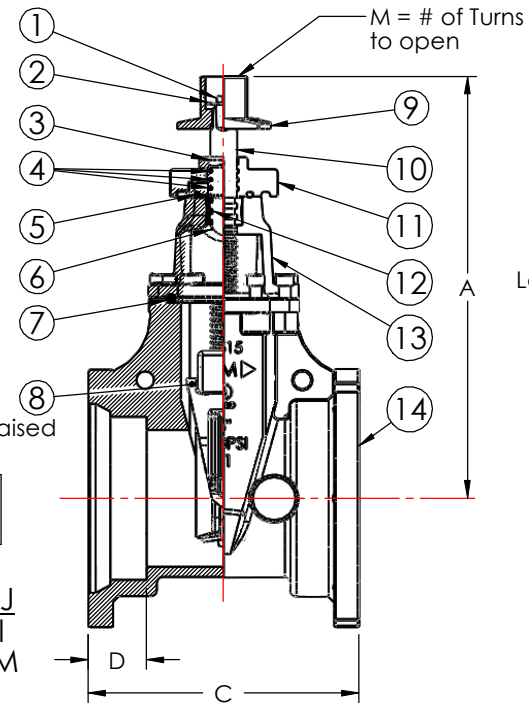
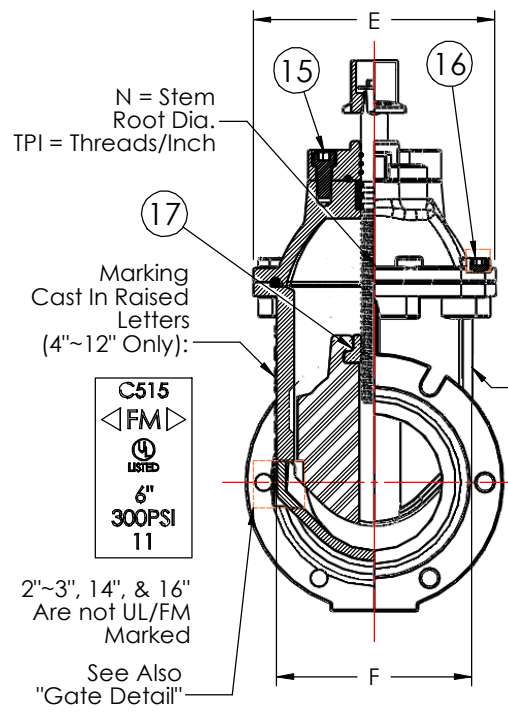


Flange x Flange Model 2010FF



Tapping Model 2010TM

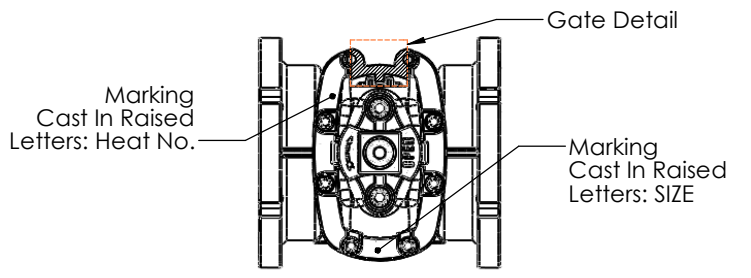
Dimensions For Resilient Wedge Valve												
Nom	A	B	C	D	E	F	G	H	L	M	N	TPI
2"	10.4	7	9.25	2.5	5.25	3.75	7	9.5	8.13	6.5	0.85	6.35
2 1/2"	11	7	-	-	-	4.75	7.5	10	-	8.2	0.85	6.35
3"	11.8	10	9.5	2.5	6.81	5.25	8	11	8.74	7	0.85	6.35
4"	13.8	10	10	2.5	7.84	6	9	13	9.5	8.5	0.78	4.233
5"	16.2	12	-	-	-	7.25	10	15.5	-	10.5	0.85	4.233
6"	17.9	12	11.5	2.5	10.31	8.25	10.5	17.3	11	13	0.85	4.233
8"	21.5	14	12.5	2.5	13.38	10.5	11.5	20.8	12	17	1	4.233
10"	25.4	16	14.75	2.5	15.5	13	13	25	13.88	21	1.16	4.233
12"	28.8	16	14.88	2.5	18.5	15.25	14	38.3	14.44	25	1.16	4.233
14"	36.1	16	17	3.5	21	17.75	15	35.6	16.5	44	1.29	3.175
16"	39	22	17	3.5	23	19.75	16	38.6	16.5	50	1.44	6.35



Item No.	Description	Qty.	Material/Specification
1	Hex Bolt	1	304 Stn. Stl.
2	Washer	1	304 Stn. Stl.
3	Dirt Seal	1	EPDM
4	O-Ring (Bonnet Cap, Stem)	3	EPDM
5	O-Ring (Bonnet Cap, Bonnet)	1	EPDM
6	O-Ring (Stem)	1	EPDM
7	O-Ring (Bonnet to Body)	1	EPDM
8	Gate	1	EPDM
9	Operating Nut	1	Ductile Iron ASTM A536 64-45-12
10	Stem	1	420 Stn. Stl.
11	Bonnet Cap	1	Ductile Iron ASTM A536 64-45-12
12	Split Ring (Stem)	2	Bronze B62
13	Bonnet	1	Ductile Iron ASTM A536 64-45-12
14	Body	1	Ductile Iron ASTM A536 64-45-12
15	Allen Bolt		304 Stn. Stl.
16	Allen Bolt		304 Stn. Stl.
17	Gate (Stem) Nut	1	Bronze B62

Notes:

- Resilient Seat Gate Valves shall comply with AWWA C515-09 Standard.
- Body, bonnet, and wedge of the gate valve shall be of high strength ductile-iron, ASTM A536, Grade 65-45-12.
- Fusion Bond Epoxy Coated Interior and Exterior, AWWA C550. Epoxy Powder Certified to NSF-61.
- Valves shall be equipped with 2" square operating nut (black)(handwheels optional for flanged valves) indicating the direction of opening. Operating nuts for Open Right valves shall be color coded red.
- Stuffing Box Gland shall have a minimum of three (3) O-rings capable of replacement under pressure while gate is in the full open position.
- Stuffing Box Gland, Bonnet, and Body Fasteners shall be 304 Stainless Steel Blind Tapped with Sockets to eliminate exposed Bolt Threads or Nuts.
- EPDM O-ring Seals shall be located between Stuffing Box Gland, Bonnet, and Body.
- Operating Stem shall be 420 Stainless Steel with (3) Machined Grooves located just above the Lower Stem O-ring to accept and mate with a 2 Piece Bronze C-54400 Split Ring. The design of the Stem and Split Ring will eliminate any upward or downward operating thrust on any iron service.
- Wedge Nut shall be C-54400 Bronze Cast integrally to a Ductile Iron Gate with a fully Encapsulated Rubber EPDM Seat.
- Mechanical Joint Ends shall be in accordance with ANSI A21.11 / AWWA C111 Standard, Flanged Ends in accordance with ANSI B16.1, 125 lb. pattern. (AWWA C110 Standard).
- Valve Operating Pressure Rating: 2"-3", 14", and 16" = 250psi; 4"-12" = 300 psi.




2"-3", 14", & 16" Are not UL/FM Marked

See Also "Gate Detail"



MJ x MJ Model 2010MM

NAME	DATE		United Water Products 2113 West 30th Street Jacksonville, FL 32209 Tel: 877-766-4459 Fax: 877-766-4458 www.unitedwaterproducts.com
DRAWN	RCM 11/8/11		
TITLE: UNITED Model 2010 AWWA C515 Gate Valves		DWG. NO. <b>9259-0000-C</b>	REV <b>A</b>
PROPRIETARY AND CONFIDENTIAL THE INFORMATION CONTAINED IN THIS DRAWING IS THE SOLE PROPERTY OF UNITED WATER PRODUCTS. ANY REPRODUCTION IN PART OR AS A WHOLE WITHOUT THE WRITTEN PERMISSION OF LINX LTD. IS PROHIBITED.			