

Features

- The TBM5-TERM dry contact control module is designed to provide on-off control of one circuit by means of a touch-sensitive input.
- Rated for loads of 0.5 amps at 125VAC or 1 amp at 30VAC/30VDC.
- Number of operations under rated electrical load is 200,000 minimum.
- The touch controller uses a relay to provide fully isolated control of the load and to offer maximum immunity to false triggering. A Form-C (SPDT) contact is provided to give the installer maximum connection flexibility.
- The touch controller is activated by a TouchBolt™ Assembly. The TouchBolt™ Assembly can be ordered in various lengths and configurations.
- Stranded copper wire, #16 AWG, is recommended for the active touch sense.
- Maximum total distance between the touch controller and the stainless-steel bolt is 8 feet. Touch-sense must be run in separate non-metallic conduit. Through-wall penetrations must be run in PVC (non-metallic) conduit. Touch lead cannot be run with power leads. Please consult factory for application assistance.
- Screw terminals provided are rated for use with wire sizes the range of #16-22 AWG only. Use only solid or stranded copper wire for all terminal connections. Select actual wire size in accordance with applicable code.
- When using 24VAC or 24VDC (+) power input, the 24VAC/24VDC terminals are used to provide power to operate the touch controller. 24VAC or 24VDC power must be applied at all times for proper controller operation. Connect 24VAC or 24VDC (-) to line neutral and 24VAC or 24VDC (+) to line hot. Reversing these connections may result in poor noise immunity on the TouchBolt™ input and will increase susceptibility to false triggering.
- The touch controller provides a Form-C (SPDT) relay contact for control of the load circuit. When power is first applied to the controller, the relay is reset to the default state in which the C-NC contact is closed and the C-NO contact is open. Activation of the touch-sense control input will activate the relay. Release of the touch-sense control input initiates change to the subsequent state of the relay. Removal of input power will reset the relay to the default state in which the C-to-NC contact is closed and the C-to-NO contact is open. AC power must be applied at all times for proper controller operation.



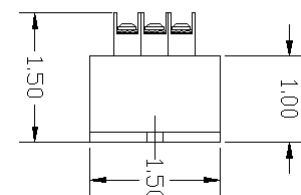
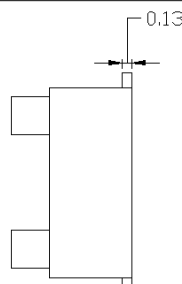
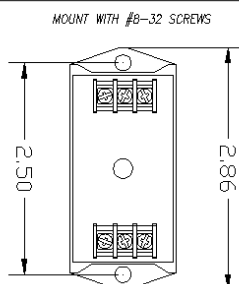
Optional Assembly View
 (Faceplate and Touchbolt™ Assembly not included with standard TBM5-TERM unit)

Ordering Information:

For standard TBM5-TERM. All other inquires, please consult the factory.

Model No. **TBM5-TERM**

Stock No. **500380**



Wiring Diagram

TBM5-TERM DRY CONTACT
CONTROL MODULE
ELECTRICAL CONNECTIONS

