

Features

- The TouchBolt™ Assembly is designed to interface with the following Easter-Owens products such as:
 - TBM5-TERM Dry Contact Control Module
 - ELCML-1 Lighting Modules (120VAC Unit)
 - ELCML-2 Lighting Modules (277VAC Unit)
- The Panel Mount TBA is designed to mount in a panel of varying thickness, up to 1/2" thick. The Panel Mount TBA consists of:
 - Stainless steel carriage bolt
 - (2) nuts
 - Front insulating bushing
 - Rear insulating bushing
 - Uninsulated wire lug
- The Thru Wall Mount TBA is used when the TouchBolt™ must be placed in a wall such as a masonry wall. The Wall Mount TBA consists of:
 - Stainless steel carriage bolt
 - (2) nuts
 - Front insulating bushing
 - Rear insulating bushing
 - Uninsulated wire lug
 - Insulating tube
- The Fixture Mount TBA is used in conjunction with the TBM5-TERM Dry Contact Module. The Fixture Mount TBA consists of:
 - Stainless steel carriage bolt
 - (2) nuts
 - Front insulating bushing
 - Rear insulating washer
 - Uninsulated wire lug
- Bolt sizes are 1/4-20 and 1/2-13.
- Lengths range from 1.00" to 10" long, custom sizes available.
- Stainless steel bolt and hardware standard.
- Extremely rugged and highly resistance to vandalism.



Ordering Information:

For standard TouchBolt™ Assemblies, please fill out the form below. All custom inquires, please consult the factory.

Model No. **TBA** - - **S** - -

Stainless Steel Bolt

Mounting Method :
P = Panel
W = Wall
F = Fixture

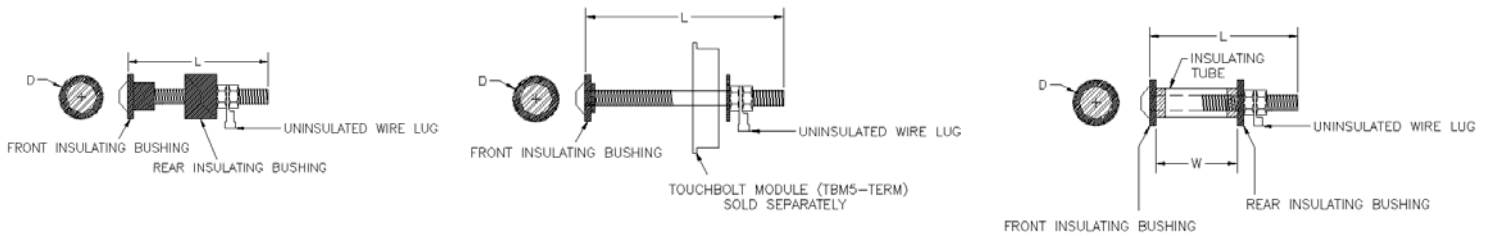
Bolt Length (Inches) :
0100 = 1.00"
0175 = 1.75"
0200 = 2.00"
0250 = 2.50"
0300 = 3.00"
0400 = 4.00"
0500 = 5.00"
0600 = 6.00"
0700 = 7.00"
0800 = 8.00"
0900 = 9.00"
1000 = 10.00"

Bolt Size :
20 = 1/4-20 Bolt
13 = 1/2-13 Bolt

PANEL MOUNT

FIXTURE MOUNT

THRU WALL MOUNT



Part #	Stock #	Description	Length (L)	Wall Thickness (W)	Diameter (D)	Application
TBAWS130600	501071	1/2-13 x 6.00 SS TBA	6.00"	4.00"	1.500	For Walls 4" Thick
TBAWS130800	501073	1/2-13 x 8.00 SS TBA	8.00"	6.00"	1.500	For Walls 6" Thick
TBAWS131000	501070	1/2-13 x 10.00 SS TBA	10.00"	8.00"	1.500	For Walls 8" Thick
TBAFS200175	501065	1/4-20 x 1.75 SS TBA	1.75"	N/A	1.000	For 14ga to 11ga Plates
TBAPS200175	501068	1/4-20 x 1.75 SS TBA	1.75"	N/A	1.000	For Panel Thickness Up to 1/4" Thick
TBAPS130250	501066	1/2-13 x 2.50 SS TBA	2.50"	N/A	1.500	For Panel Thickness Up to 1/2" Thick